

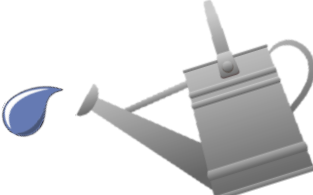

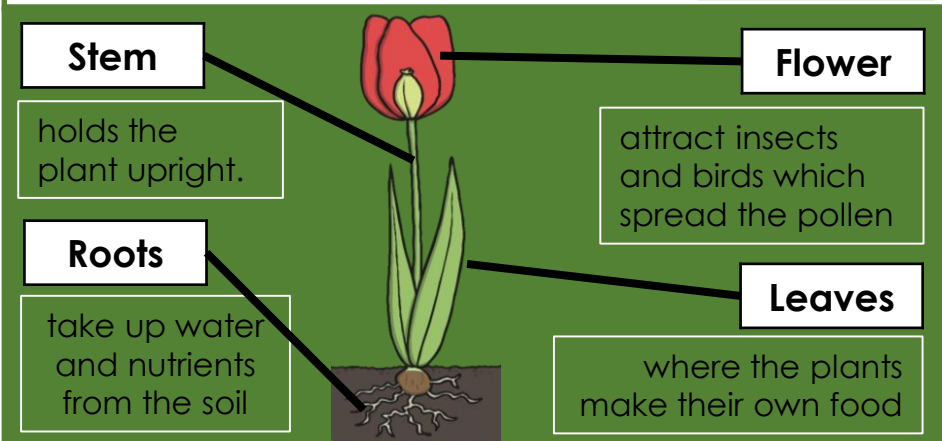
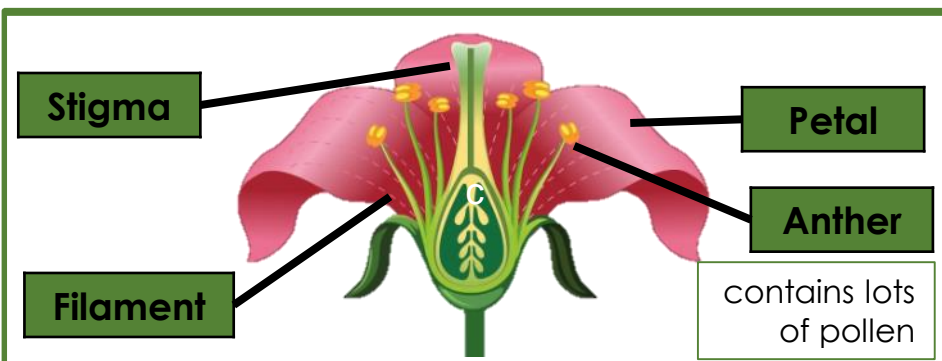


# Plants : Year 1 : Summer 1



## What plants need to survive

<p>Sunlight</p> 	<p>Carbon dioxide from the air</p> 
<p>Water</p> 	<p>The correct temperature</p> 

## Parts of a flower



## Types of tree

Deciduous Trees	Evergreen Trees
<p>Lose leaves each year</p> <p>Deciduous leaves are:</p> <ul style="list-style-type: none"> <li>• flat</li> <li>• broad</li> <li>• have veins</li> <li>• running through them</li> </ul> <p>Examples include: Oak trees Sycamore trees</p> 	<p>Keep leaves all year round</p> <p>Evergreen leaves are:</p> <ul style="list-style-type: none"> <li>• thick</li> <li>• small</li> <li>• Narrow like needles</li> </ul> <p>Examples include: Yew trees Pine trees</p> 

## How a bean grows

