

SLUMS

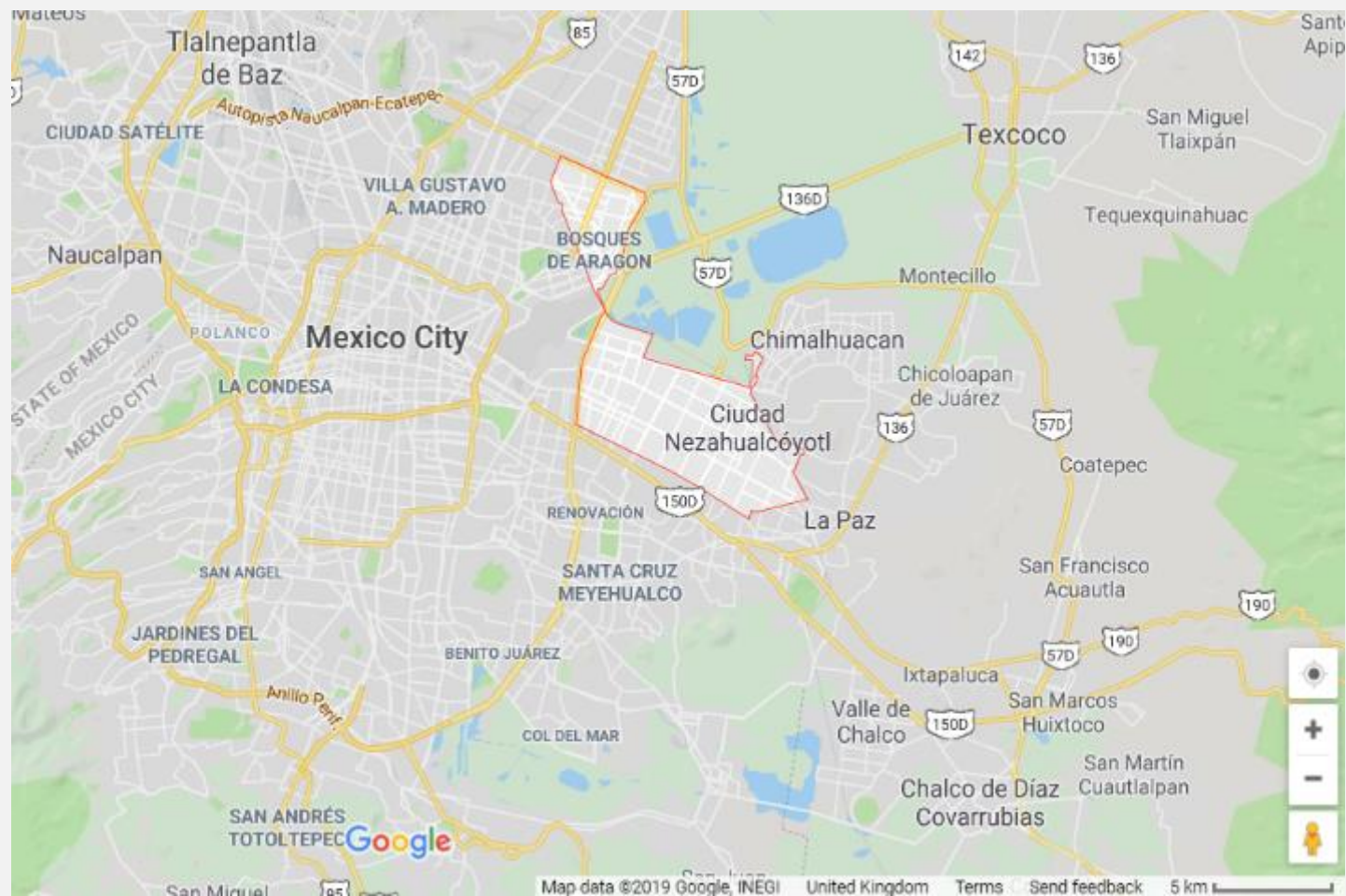
YEAR FIVE

AUTUMN 2

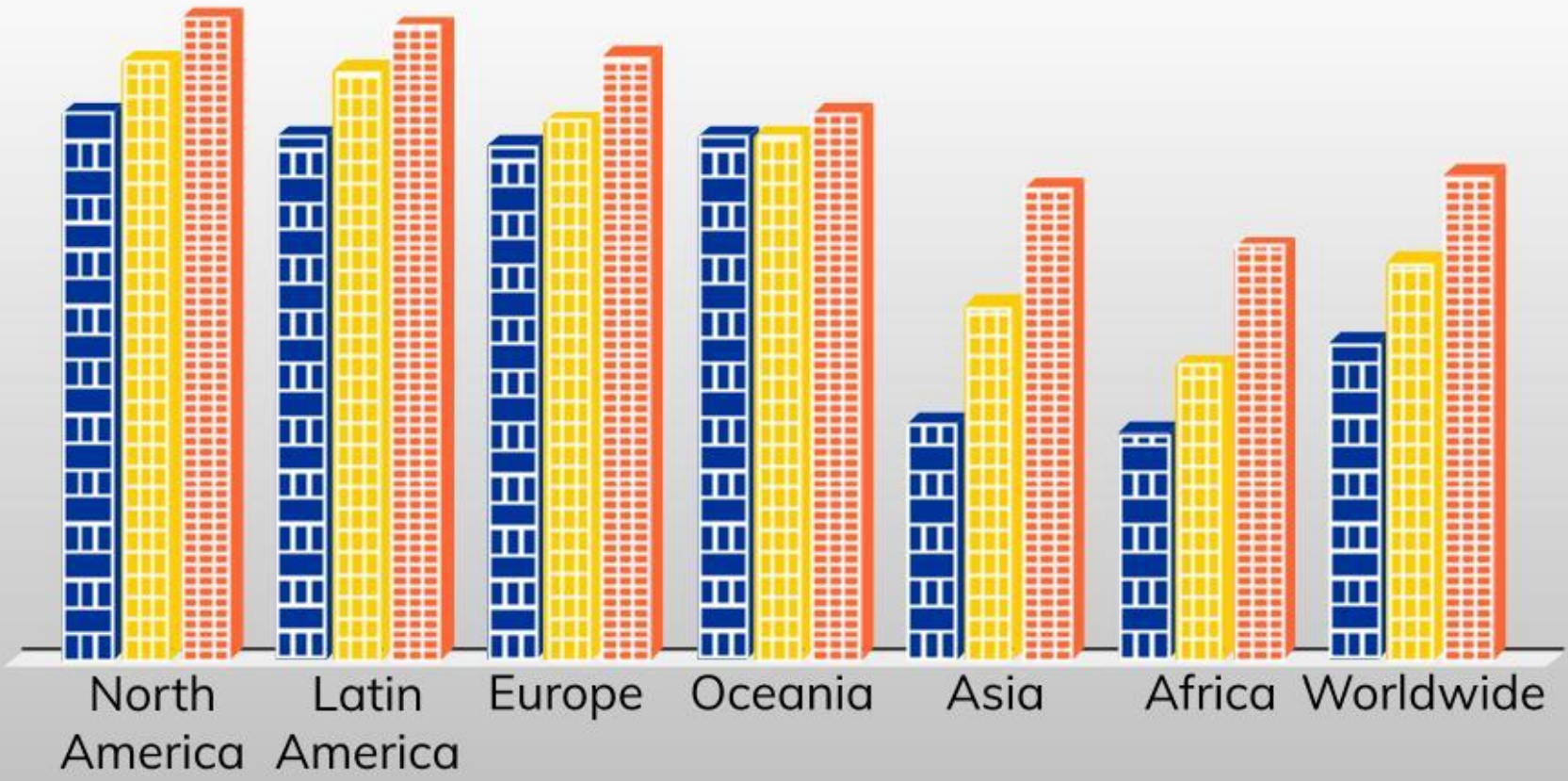


LESSON TWO

WHY DO SLUMS DEVELOP?



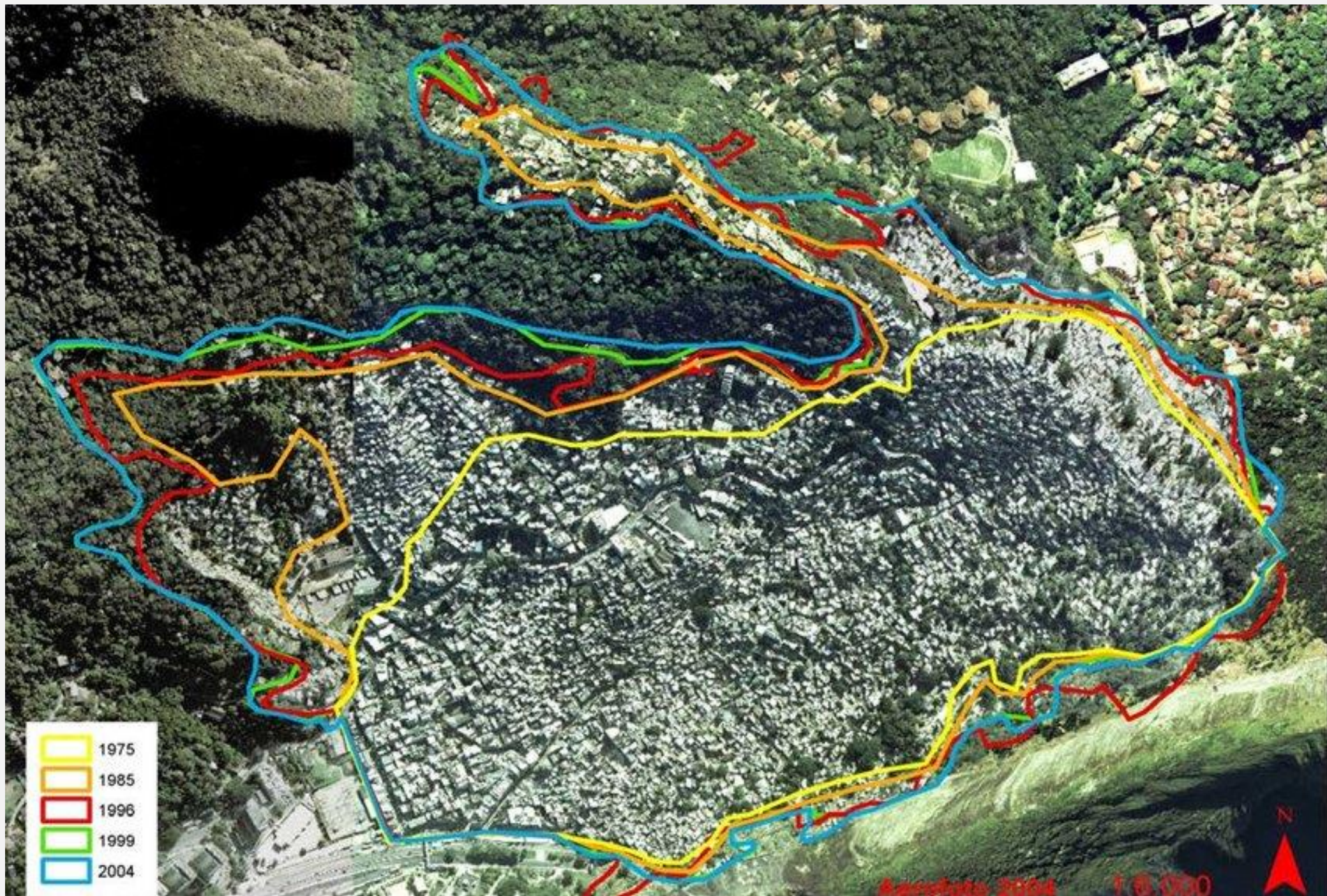
Slums usually develop around big cities.



54% of the World's Population Now Lives in Cities

■ 1990
 ■ 2014
 ■ 2050

Spatial growth of Rocinha (Rio de Janeiro) between 1975 and 2004. (Source: Instituto Pereira Passos)



Push Factors



Pull Factors



- few services
- lack of job opportunities
- unhappy life
- poor transport links
- natural disasters
- wars
- shortage of food

- access to services
- better job opportunities
- more entertainment facilities
- better transport links
- improved living conditions
- hope for a better way of life
- family links



SLUMS

YEAR FIVE

AUTUMN 2

**Complete
your
learning
review**